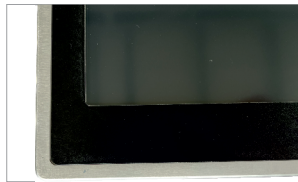


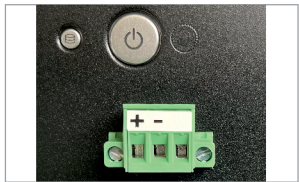
CUSTOMIZABLE DISPLAY



Thin chassis



Customizable front Panel

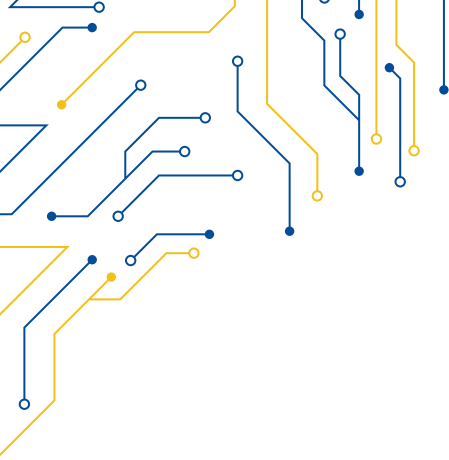


Wide Range Power Input



Frontal USB Port

MODEL	WLT-121
I/O	
VGA	1
DVI-D	1
USB	2x USB 2.0
OTHERS	USB front panel
DISPLAY TYPE	
DISPLAY TYPE	21.5" TFT-LCD 16:9
MAX RESOLUTION	1920x1080
MAX COLOR	16.7M
BRIGHTNESS (cd/m ²)	300
VIEW ANGLE (H°/V°)	89/89
CONTRAST	5000:1
TOUCHSCREEN	
TYPE	Resistive (R)
INTERFACE	USB
LIGHT TRANSMISSION	Resistive: 80
POWER	
POWER INPUT	9 ~ 36V DC
POWER CONSUMPTION	30W MAX.
MECHANICAL	
CONSTRUCTION	Aluminium chassis with customizable font
IP RATING	IP65 Front Panel
MOUNTING	Panel Mounting
DIMENSIONS (mm)	564 x 348 x 68
NET WEIGHT (kg)	6.5
ENVIRONMENT	
OPERATING TEMPERATURE	0 ~ 50° C
STORAGE TEMPERATURE	-20 ~ 70° C
STORAGE HUMIDITY	10 ~ 90% @40 non-condensing
ORDERING	
WLT-121	Monitor Wide 21.5" Resistive TS, 1920x1080, PW 9-36V DC



WLT-121

