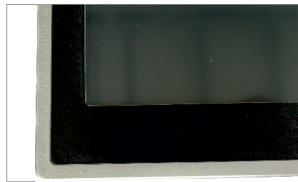


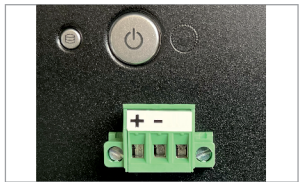
## CUSTOMIZABLE DISPLAY



Thin chassis



Customizable front Panel

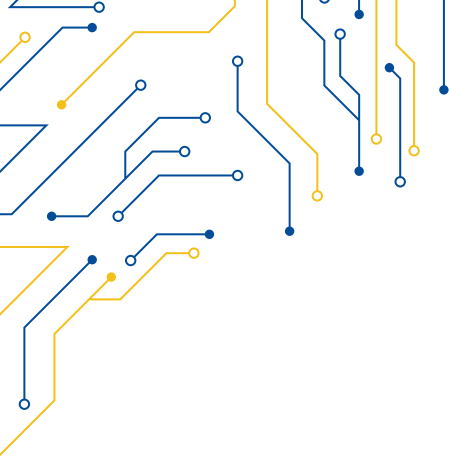


Wide Range Power Input



Frontal USB Port

MODEL	WLT-118	WLT-118F
<b>I/O</b>		
VGA	1	
DVI-D	1	
USB	2x USB 2.0	
OTHERS	USB front panel	
<b>DISPLAY TYPE</b>		
DISPLAY TYPE	18.5" TFT-LCD 16:9	
MAX RESOLUTION	1366x768	1920x1080 (F)
MAX COLOR	16.7M	
BRIGHTNESS (cd/m <sup>2</sup> )	300	
VIEW ANGLE (H°/V°)	85/80	
CONTRAST	1000:1	
<b>TOUCHSCREEN</b>		
TYPE	Resistive (R)	
INTERFACE	USB	
LIGHT TRANSMISSION	Resistive: 80	
<b>POWER</b>		
POWER INPUT	9 ~ 36V DC	
POWER CONSUMPTION	30W MAX.	
<b>MECHANICAL</b>		
CONSTRUCTION	Aluminium chassis with customizable font	
IP RATING	IP65 Front Panel	
MOUNTING	Panel Mounting	
DIMENSIONS (mm)	483 x 310 x 68	
NET WEIGHT (kg)	5.5	
<b>ENVIRONMENT</b>		
OPERATING TEMPERATURE	0 ~ 50° C	
STORAGE TEMPERATURE	-20 ~ 70° C	
STORAGE HUMIDITY	10 ~ 90% @40 non-condensing	
<b>ORDERING</b>		
WLT-118	Monitor Wide 18.5" Resistive TS, 1366x768, PW 9-36V DC	
WLT-118F	Monitor Wide 18.5" Resistive TS, 1920x1080, PW 9-36V DC	



**WLT-118**

