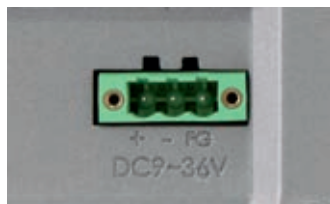




ALUMINIUM DISPLAY



Wide range power input



Easy Rear access to OSD

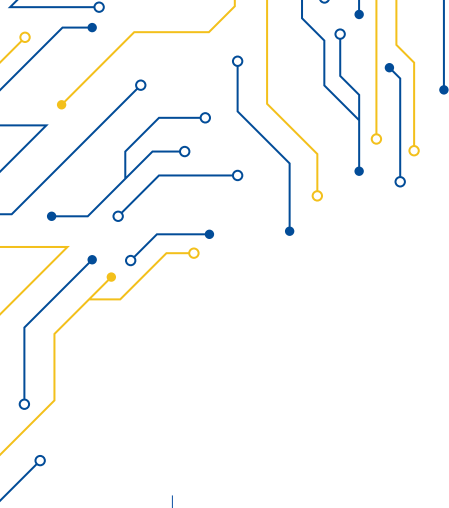


Die-casted aluminium rear



Zero bezel frontal panel

MODEL	VLT-121A
I/O	
VGA	1
DVI-D	1
DP	1
HDMI	1
AUDIO	1 (Line-in)
OSD CONTROL MEMBRANE	OSD on the rear side, on board controller, extendable key pad from connector
POWER	1x USB type-A for touch control, 1x Line-in by phone jack 1x Rs232 DB9
DISPLAY	
DISPLAY TYPE	21.5" TFT-LCD 16:9
MAX RESOLUTION	1920x1080
MAX COLOR	16.7M
BRIGHTNESS (cd/m ²)	250
VIEW ANGLE (H°/V°)	178x178
BACKLIGHT LIFETIME (hrs)	30000
CONTRAST	3000:1
TOUCHSCREEN	
TYPE	Resistive Zero Bezel (R) Projected Capacitive (P)
INTERFACE	USB
LIGHT TRANSMISSION	Resistive: 80 Capacitive: 90
POWER	
POWER INPUT	9 ~ 36V DC
POWER CONSUMPTION	18W (P)
MECHANICAL	
CONSTRUCTION	Aluminium die-casting chassis
IP RATING	IP66 Compliant Front Bezel
MOUNTING	Panel/VESA Mounting (VESA 100 x 100)
DIMENSIONS (mm)	557.3 x 362.3 x 64.8 mm
NET WEIGHT (kg)	7.5kg
ENVIRONMENT	
OPERATING TEMPERATURE	0 ~ 50° C
STORAGE TEMPERATURE	-20 ~ 70° C
STORAGE HUMIDITY	10 ~ 90 % non-condensing
ORDERING	
VLT-121AP	21.5" FHD FPD Industrial Display Projected Capacitive Touch, 1920x1080
VLT-121AR	21.5" FHD FPD Industrial Display Resistive Touch, 1920x1080
VLT-121AG	21.5" FHD FPD Industrial Display Glass, 1920x1080



VLT-121A

