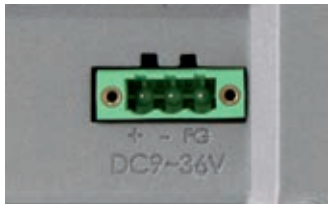




ALUMINIUM DISPLAY

MODEL	VLT-116A
I/O	
VGA	1
DVI-D	1
DP	1
HDMI	1
AUDIO	1 (Line-in)
OSD CONTROL MEMBRANE	OSD on the rear side, on board controller, extendable key pad from connector
POWER	1x USB type-A for touch control, 1x Line-in by phone jack 1x Rs232 DB9
DISPLAY	
DISPLAY TYPE	15.6" TFT-LCD 16:9
MAX RESOLUTION	1366 x 768
MAX COLOR	16.7M
BRIGHTNESS (cd/m ²)	300
VIEW ANGLE (H°/V°)	160x160
BACKLIGHT LIFETIME (hrs)	50000
CONTRAST	500:1
TOUCHSCREEN	
TYPE	Resistive Zero Bezel (R) Projected Capacitive (P)
INTERFACE	USB
LIGHT TRANSMISSION	Resistive: 80 Capacitive: 90
POWER	
POWER INPUT	9 ~ 36V DC
POWER CONSUMPTION	12.2W (R) / 12.3W (P)
MECHANICAL	
CONSTRUCTION	Aluminium die-casting chassis
IP RATING	IP66 Compliant Front Bezel
MOUNTING	Panel/VESA Mounting (VESA 100 x 100)
DIMENSIONS (mm)	412 x 277.5 x 58.9
NET WEIGHT (kg)	4.4
ENVIRONMENT	
OPERATING TEMPERATURE	0 ~ 50° C
STORAGE TEMPERATURE	-20 ~ 70° C
STORAGE HUMIDITY	10 ~ 90 % non-condensing
ORDERING	
VLT-116AP	15.6" TFT LCD Industrial Display Projected Capacitive Touch, 1366x768
VLT-116AR	15.6" TFT LCD Industrial Display Resistive Touch Window, 1366x768
VLT-116AG	15.6" TFT LCD Industrial Glass Display, 1366x768



Wide range power input



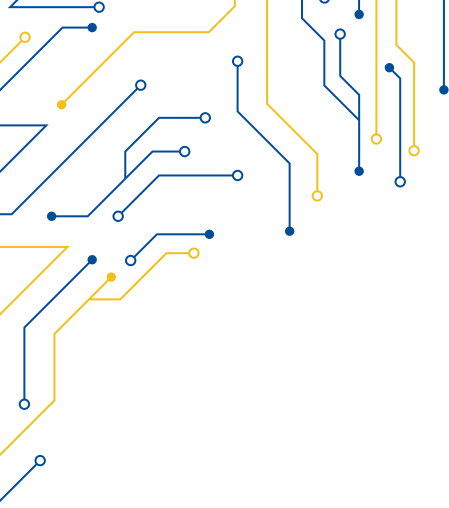
Easy Rear access to OSD



Die-casted aluminium rear



Zero bezel frontal panel



VLT-116A

