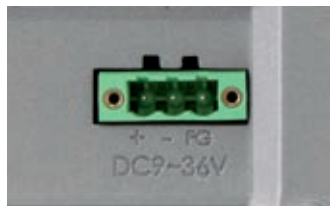




### ALUMINIUM DISPLAY



Wide range power input



Easy Rear access to OSD

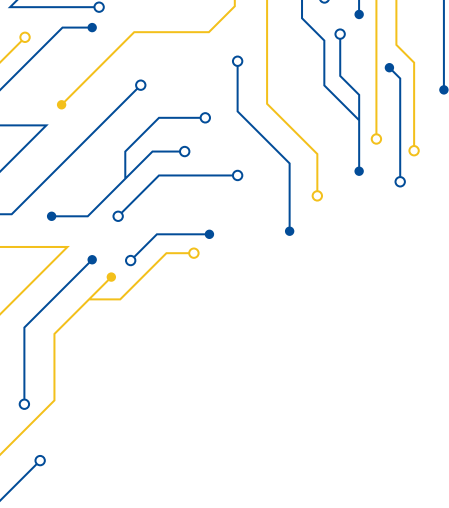


Die-casted aluminium rear



Zero bezel frontal panel

MODEL	VLT-115A
<b>I/O</b>	
VGA	1
DVI-D	1
DP	1
HDMI	1
AUDIO	1 (Line-in)
OSD CONTROL MEMBRANE	OSD on the rear side, on board controller, extendable key pad from connector
POWER	1x USB type-A for touch control, 1x Line-in by phone hack 1x Rs232 DB9
<b>DISPLAY</b>	
DISPLAY TYPE	15" TFT-LCD 4:3
MAX RESOLUTION	1024 x 768
MAX COLOR	262K
BRIGHTNESS (cd/m <sup>2</sup> )	420
VIEW ANGLE (H°/V°)	160x160
BACKLIGHT LIFETIME (hrs)	30000
CONTRAST	800:1
<b>TOUCHSCREEN</b>	
TYPE	Resistive Zero Bezel (R)   Projected Capacitive (P)   Glass (G)
INTERFACE	USB
LIGHT TRANSMISSION	Resistive: 80   Capacitive: 90
<b>POWER</b>	
POWER INPUT	9 ~ 36V DC
POWER CONSUMPTION	12.5W (R) / 12.4W (P)
<b>MECHANICAL</b>	
CONSTRUCTION	Aluminium die-casting chassis
IP RATING	IP66 Compliant Front Bezel
MOUNTING	Panel/VESA Mounting (VESA 100 x 100)
DIMENSIONS (mm)	410 x 310 x 54.6
NET WEIGHT (kg)	4.3
<b>ENVIRONMENT</b>	
OPERATING TEMPERATURE	0 ~ 50° C
STORAGE TEMPERATURE	-20 ~ 70° C
STORAGE HUMIDITY	10 ~ 90 % non-condensing
<b>ORDERING</b>	
VLT-115AP	15" TFT LCD Industrial Display Projected Capacitive Touch, 420cd/m <sup>2</sup>
VLT-115AR	15" TFT LCD Industrial Display Resistive Touch Window, 420cd/m <sup>2</sup>
VLT-115AG	15" TFT LCD Industrial Glass Display, 420cd/m <sup>2</sup>



**VLT-115A**

