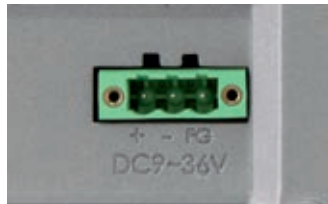




ALUMINIUM DISPLAY



Wide range power input



Easy Rear access to OSD

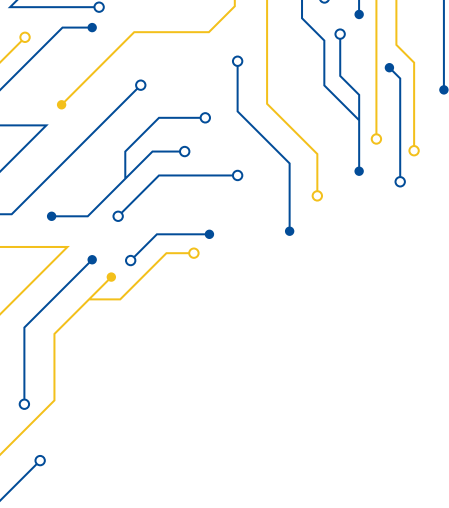


Die-casted aluminium rear



Zero bezel frontal panel

MODEL	VLT-112A	
I/O		
VGA	1	
DVI-D / HDMI	1x Shared Port	
DP	1	
USB	1x USB type B for touch control	
AUDIO	1x (Line-in), 1x Optional Speaker	
OSD	OSD on the rear side, on board controller, extendable keypad from connector	
POWER	1x power 3-pin terminal block	
DISPLAY		
DISPLAY TYPE	12.1" TFT-LCD 4:3	
MAX RESOLUTION	800x600	1024x768
MAX COLOR	16.2M	
BRIGHTNESS (cd/m ²)	450	1000
VIEW ANGLE (H°/V°)	178x178	
BACKLIGHT LIFETIME (hrs)	50000	
CONTRAST	700:1	
TOUCHSCREEN		
TYPE	Resistive Zero Bezel (R) Projected Capacitive (P) Glass (G)	
INTERFACE	USB	
LIGHT TRANSMISSION	Resistive: 80 Capacitive: 90	
POWER		
POWER INPUT	9 ~ 36V DC	
POWER CONSUMPTION	9W MAX.	
MECHANICAL		
CONSTRUCTION	Aluminium die-casting chassis	
IP RATING	IP66 Compliant Front Bezel	
MOUNTING	Panel/VESA Mounting (VESA 100 x 100)	
DIMENSIONS (mm)	319 x 245 x 51.68	
NET WEIGHT (kg)	2.6	
ENVIRONMENT		
OPERATING TEMPERATURE	0 ~ 50° C	
STORAGE TEMPERATURE	-20 ~ 70° C	
STORAGE HUMIDITY	10 ~ 90 % non-condensing	
ORDERING		
VLT-112AP	12.1" TFT LCD Industrial Display Projected Capacitive Touch, 450cd/m ²	
VLT-112AR	12.1" TFT LCD Industrial Display Resistive Touch Window, 450cd/m ²	
VLT-112AG	12.1" TFT LCD Industrial Glass Display, 450cd/m ²	



VLT-112A

