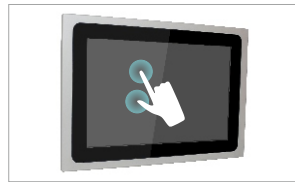




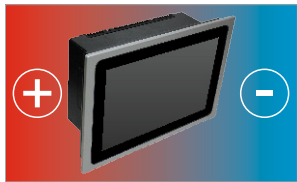
## ALUMINIUM DISPLAY



IP66 Front Panel



Zero bezel supports Multi-Touch

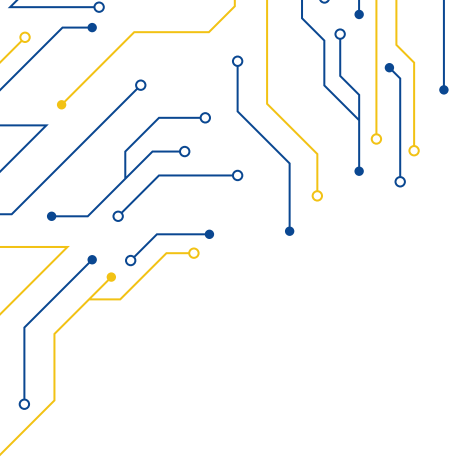


Wide Temperature range



Zero bezel frontal panel

MODEL	SLIM-124
<b>I/O</b>	
VGA	1
DVI-D	1
TOUCHSCREEN	USB
OTHERS	-
OSD CONTROL	-
POWER	4-pin DC terminal block, 2-pin remote power switch
<b>DISPLAY</b>	
DISPLAY TYPE	24" TFT-LCD 16:9
MAX RESOLUTION	1920 x 1080
MAX COLOR	16.7M
BRIGHTNESS (cd/m <sup>2</sup> )	250
VIEW ANGLE (H°/V°)	89/89
CONTRAST	1000:1
<b>TOUCHSCREEN</b>	
TYPE	Projected Capacitive (P)
INTERFACE	USB
LIGHT TRANSMISSION	Capacitive: 90
<b>POWER</b>	
POWER INPUT	9 ~ 36V DC
POWER CONSUMPTION	30W MAX.
<b>MECHANICAL</b>	
CONSTRUCTION	Aluminium die-casting chassis & Front Panel   Inox 316 (Optional)
IP RATING	IP66 Compliant Front Panel
MOUNTING	Panel Mounting
DIMENSIONS (mm)	615 x 383 x 63
NET WEIGHT (kg)	7
<b>ENVIRONMENT</b>	
OPERATING TEMPERATURE	0 ~ 50° C
STORAGE TEMPERATURE	-20 ~ 70° C
STORAGE HUMIDITY	CE
<b>ORDERING</b>	
ORDERING CODE	23.8" TFT LCD Industrial Display Projected Capacitive Touch, 1920x1080



**SLIM-124**

