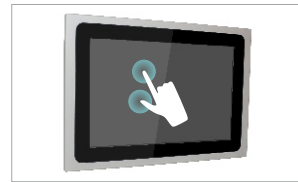


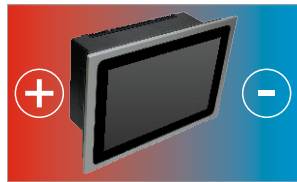
## ALUMINIUM DISPLAY



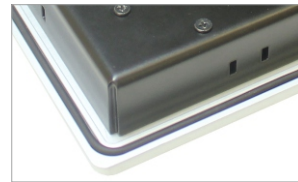
IP66 Front Panel



Zero bezel supports Multi-Touch

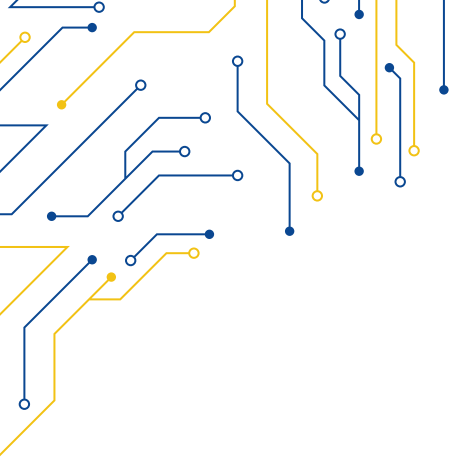


Wide Temperature range



Zero bezel frontal panel

MODEL	SLIM-119	
<b>I/O</b>		
VGA	1	
DVI-D	1	
TOUCHSCREEN	USB	
OTHERS	-	
OSD CONTROL	-	
POWER	4-pin DC terminal block, 2-pin remote power switch	
<b>DISPLAY</b>		
DISPLAY TYPE	19" TFT-LCD 4:3	
MAX RESOLUTION	1280 x 1024	
MAX COLOR	16.7M	
BRIGHTNESS (cd/m <sup>2</sup> )	300	
VIEW ANGLE (H°/V°)	85/85	80/80
CONTRAST	500:1	
<b>TOUCHSCREEN</b>		
TYPE	Resistive Zero Bezel (R)   Projected Capacitive (P)	
INTERFACE	USB	
LIGHT TRANSMISSION	Resistive: 80   Capacitive: 90	
<b>POWER</b>		
POWER INPUT	9 ~ 36V DC	
POWER CONSUMPTION	30W MAX.	
<b>MECHANICAL</b>		
CONSTRUCTION	Aluminium Front Panel   Inox 316 (Optional)	
IP RATING	IP66 Front Panel	
MOUNTING	Panel Mounting	
DIMENSIONS (mm)	483 x 399 x 61	
NET WEIGHT (kg)	-	
<b>ENVIRONMENT</b>		
OPERATING TEMPERATURE	0 ~ 50° C	
STORAGE TEMPERATURE	-30 ~ 70° C	
STORAGE HUMIDITY	CE	
<b>ORDERING</b>		
SLIM-119P	19" TFT LCD Industrial Display Projected Capacitive Touch, 1280x1024	
SLIM-119R	19" TFT LCD Industrial Display Resistive Touch Window, 1280x1024	



**SLIM-119**

