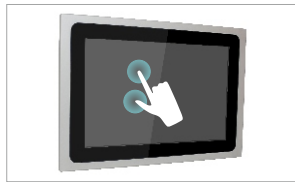


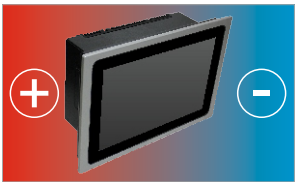
ALUMINIUM DISPLAY



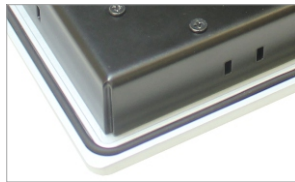
IP65 Front Panel



Zero bezel supports Multi-Touch



Wide Temperature range



Zero bezel frontal panel

MODEL	SLIM-118	
I/O		
VGA	1	
DVI-D	1	
USB	USB	
AUDIO	USB front panel	
OSD	-	
POWER	4-pin DC terminal block, 2-pin remote power switch	
DISPLAY		
DISPLAY TYPE	18.5" TFT-LCD 16:9	
MAX RESOLUTION	1366x768	1920x1080 (F)
MAX COLOR	16.2M	
BRIGHTNESS (cd/m ²)	300	400
VIEW ANGLE (H°/V°)	85/85	80/80
CONTRAST	1000:1	1500:1
TOUCHSCREEN		
TYPE	Resistive Zero Bezel (R) Projected Capacitive (P)	
INTERFACE	USB	
LIGHT TRANSMISSION	Resistive: 80 Capacitive: 90	
POWER		
POWER INPUT	9 ~ 36V DC	
POWER CONSUMPTION	30W MAX.	
MECHANICAL		
CONSTRUCTION	Aluminium Front Panel Inox 316 (Optional)	
IP RATING	IP65 Front Panel	
MOUNTING	Panel Mounting	
DIMENSIONS (mm)	504 x 356 x 62 536 x 380 x 62	
NET WEIGHT (kg)	-	
ENVIRONMENT		
OPERATING TEMPERATURE	0 ~ 50° C	
STORAGE TEMPERATURE	-30 ~ 70° C	
STORAGE HUMIDITY	CE	
ORDERING		
SLIM-118P	18.5" TFT LCD Industrial Display Projected Capacitive Touch, 1366x768	
SLIM-118R	18.5" TFT LCD Industrial Display Resistive Touch Window, 1366x768	
SLIM-118PF	18.5" TFT LCD Industrial Display Projected Capacitive Touch, 1920x1080	
SLIM-118RF	18.5" TFT LCD Industrial Display Resistive Touch Window, 1920x1080	

SLIM-118

