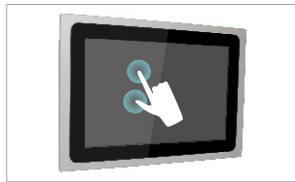


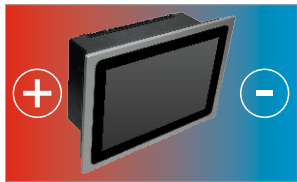
ALUMINIUM DISPLAY



IP66 Front Panel



Zero bezel supports Multi-Touch

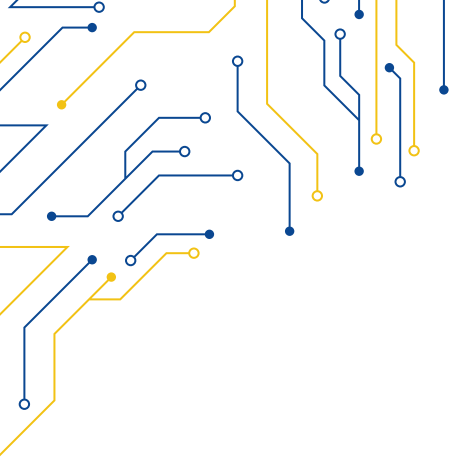


Wide Temperature range



Zero bezel frontal panel

MODEL	SLIM-116	
I/O		
VGA	1	
DVI-D	1	
USB	1x USB type B for touch control	
AUDIO	NA	
OSD	NA	
POWER	4-pin DC terminal block, 2-pin remote power switch	
DISPLAY		
DISPLAY TYPE	15.6" TFT-LCD 16:9	
MAX RESOLUTION	1366x768	1920x1080 (F)
MAX COLOR	16.2M	
BRIGHTNESS (cd/m ²)	300	450
VIEW ANGLE (H°/V°)	85/85	80/80
CONTRAST	500:1	1500:1
TOUCHSCREEN		
TYPE	Resistive Zero Bezel (R) Projected Capacitive (P)	
INTERFACE	USB	
LIGHT TRANSMISSION	Resistive: 80 Capacitive: 90	
POWER		
POWER INPUT	9 ~ 36V DC	
POWER CONSUMPTION	30W MAX.	
MECHANICAL		
CONSTRUCTION	Aluminium Front Panel Inox 316 (Optional)	
IP RATING	IP66 Compliant Front Bezel	
MOUNTING	Panel/VESA Mounting	
DIMENSIONS (mm)	410 x 255 x 66	
NET WEIGHT (kg)		
ENVIRONMENT		
OPERATING TEMPERATURE	0 ~ 50° C	
STORAGE TEMPERATURE	-30 ~ 70° C	
STORAGE HUMIDITY	10 ~ 90 % non-condensing	
ORDERING		
SLIM-116P	15.6" TFT LCD Industrial Display Projected Capacitive Touch, 1366x768	
SLIM-116R	15.6" TFT LCD Industrial Display Resistive Touch Window, 1366x768	
SLIM-116FR	15.6" TFT LCD Industrial Display Resistive Touch Window, 1920x1080	
SLIM-116FP	15.6" TFT LCD Industrial Display Projected Capacitive Touch, 1920x1080	



SLIM-116

