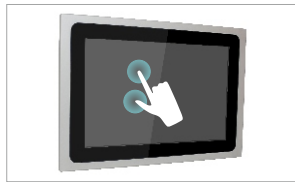


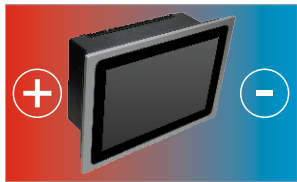
ALUMINIUM DISPLAY



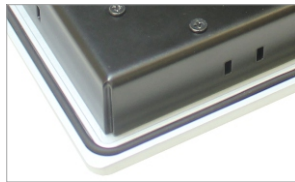
IP66 Front Panel



Zero bezel supports Multi-Touch

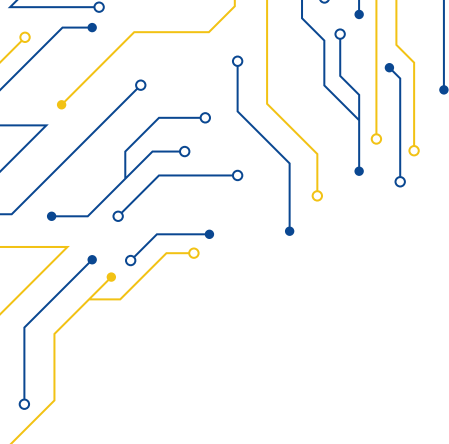


Wide Temperature range



Zero bezel frontal panel

MODEL	SLIM-115
I/O	
VGA	1
DVI-D	1
USB	1x USB type B for touch control
AUDIO	NA
OSD	NA
POWER	4-pin DC terminal block, 2-pin remote power switch
DISPLAY	
DISPLAY TYPE	15" TFT-LCD 4:3
MAX RESOLUTION	1024x768
MAX COLOR	16.2M
BRIGHTNESS (cd/m ²)	500
VIEW ANGLE (H°/V°)	85/85
CONTRAST	1500:1
TOUCHSCREEN	
TYPE	Resistive Zero Bezel (R) Projected Capacitive (P)
INTERFACE	USB
LIGHT TRANSMISSION	Resistive: 80 Capacitive: 90
POWER	
POWER INPUT	9 ~ 36V DC
POWER CONSUMPTION	30W MAX.
MECHANICAL	
CONSTRUCTION	Aluminium Front Panel Inox 316 (Optional)
IP RATING	IP66 Compliant Front Bezel
MOUNTING	Panel/VESA Mounting
DIMENSIONS (mm)	425 x 330 x 59
NET WEIGHT (kg)	
ENVIRONMENT	
OPERATING TEMPERATURE	0 ~ 50° C
STORAGE TEMPERATURE	-30 ~ 70° C
STORAGE HUMIDITY	10 ~ 90 % non-condensing
ORDERING	
SLIM-115P	15" TFT LCD Industrial Display Projected Capacitive Touch, 1024x768
SLIM-115R	15" TFT LCD Industrial Display Resistive Touch Window, 1024x768



SLIM-115

