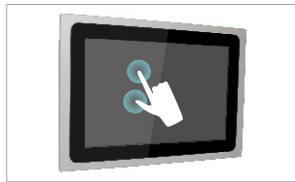


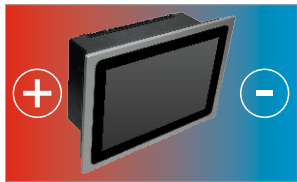
ALUMINIUM DISPLAY



IP65 Front Panel



Zero bezel supports Multi-Touch

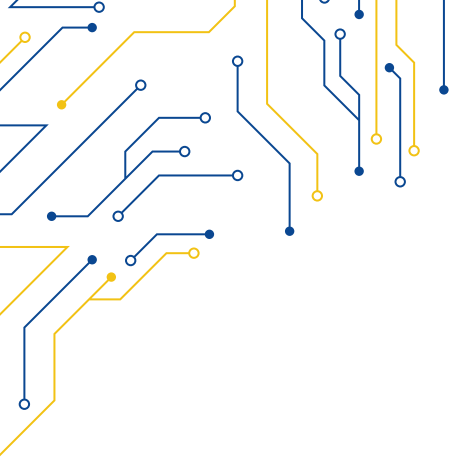


Wide Temperature range



Zero bezel frontal panel

MODEL	SLIM-112W
I/O	
VGA	1
DVI-D	1
USB	1x USB type B for touch control
AUDIO	NA
OSD	NA
POWER	4-pin DC terminal block, 2-pin remote power switch
DISPLAY	
DISPLAY TYPE	12.1" WXGA TFT-LCD 16:10
MAX RESOLUTION	1280x800
MAX COLOR	16.2M
BRIGHTNESS (cd/m ²)	500
VIEW ANGLE (H°/V°)	88/88
CONTRAST	1000:1
TOUCHSCREEN	
TYPE	Resistive Zero Bezel (R) Projected Capacitive (P)
INTERFACE	USB
LIGHT TRANSMISSION	Resistive: 80 Capacitive: 90
POWER	
POWER INPUT	9 ~ 36V DC
POWER CONSUMPTION	30W MAX.
MECHANICAL	
CONSTRUCTION	Aluminium Front Panel Inox 316 (Optional)
IP RATING	IP65 Compliant Front Bezel
MOUNTING	Panel/VESA Mounting
DIMENSIONS (mm)	340 x 224 x 64
NET WEIGHT (kg)	3.5Kg
ENVIRONMENT	
OPERATING TEMPERATURE	0 ~ 50° C
STORAGE TEMPERATURE	-30 ~ 70° C
STORAGE HUMIDITY	10 ~ 90 % non-condensing
ORDERING	
SLIM-112WP	12.1" TFT LCD Industrial Display Projected Capacitive Touch, 1280x800
SLIM-112WR	12.1" TFT LCD Industrial Display Resistive Touch Window, 1280x800



SLIM-112W

