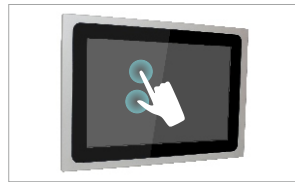


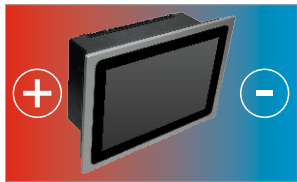
## ALUMINIUM DISPLAY



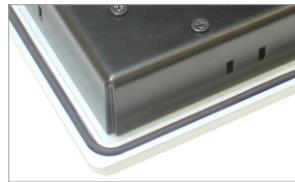
IP65 Front Panel



Zero bezel supports Multi-Touch

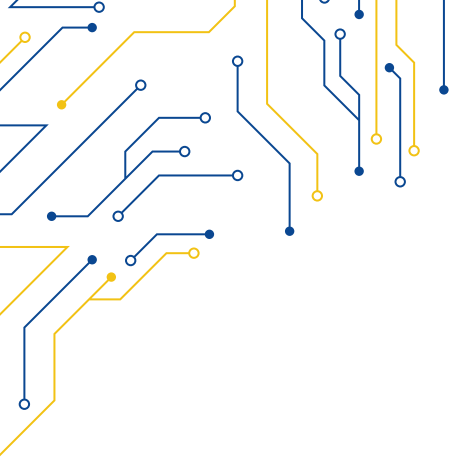


Wide Temperature range



Zero bezel frontal panel

MODEL	SLIM-112
<b>I/O</b>	
VGA	1
DVI-D	1
USB	1x USB type B for touch control
AUDIO	NA
OSD	NA
POWER	4-pin DC terminal block, 2-pin remote power switch
<b>DISPLAY</b>	
DISPLAY TYPE	12.1" TFT-LCD 4:3
MAX RESOLUTION	1024x768
MAX COLOR	16.7M
BRIGHTNESS (cd/m <sup>2</sup> )	500
VIEW ANGLE (H°/V°)	88/88
CONTRAST	1000:1
<b>TOUCHSCREEN</b>	
TYPE	Resistive Zero Bezel (R)   Projected Capacitive (P)
INTERFACE	USB
LIGHT TRANSMISSION	Resistive: 80   Capacitive: 90
<b>POWER</b>	
POWER INPUT	9 ~ 36V DC
POWER CONSUMPTION	30W MAX.
<b>MECHANICAL</b>	
CONSTRUCTION	Aluminium Front Panel   Inox 316 (Optional)
IP RATING	IP65 Compliant Front Bezel
MOUNTING	Panel/VESA Mounting
DIMENSIONS (mm)	320 x 245 x 64
NET WEIGHT (kg)	3Kg
<b>ENVIRONMENT</b>	
OPERATING TEMPERATURE	0 ~ 50° C
STORAGE TEMPERATURE	-30 ~ 70° C
STORAGE HUMIDITY	10 ~ 90 % non-condensing
<b>ORDERING</b>	
SLIM-112P	12.1" TFT LCD Industrial Display Projected Capacitive Touch, 1024x768
SLIM-112R	12.1" TFT LCD Industrial Display Resistive Touch Window, 1024x768



**SLIM-112**

