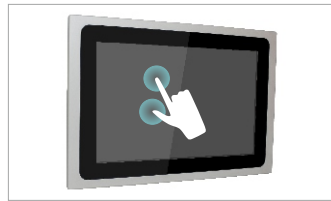


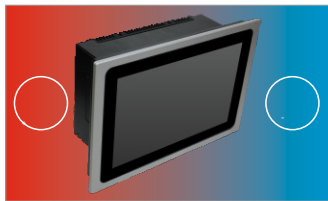
ALUMINIUM DISPLAY



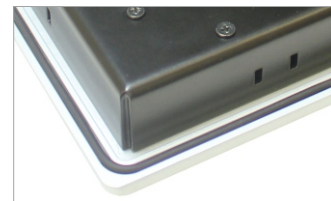
Ip65 Front Panel



Zero bezel supports Multi-Touch

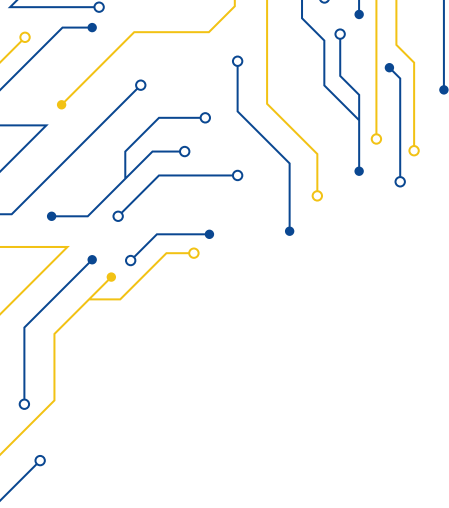


Wide temperature range



Zero bezel frontal panel

MODEL		SLIM-110
I/O		
VGA		1
DVI		1
TOUCHSCREEN		USB
OTHERS		-
OSD CONTROL		-
POWER		4 pin
DISPLAY		
DISPLAY TYPE		10.4" TFT-LCD 4:3
MAX RESOLUTION		1024 x 768
MAX COLOR		16.7 M
BRIGHTNESS (cd/m ²)		500
VIEW ANGLE (H°/V°)		88/88°
CONTRAST		1000:1
TOUCHSCREEN		
TYPE		Resistive Zero Bezel (R) Projected Capacitive (P)
INTERFACE		USB
POWER		
POWER INPUT		9 ~ 36V DC
POWER CONSUMPTION		30W MAX
MECHANICAL		
CONSTRUCTION		Aluminium front panel, INOX 316
IP RATING		IP65 front panel
MOUNTING		Panel Mounting
DIMENSIONS (mm)		297 x 222 x 64
NET WEIGHT (kg)		-
ENVIRONMENT		
OPERATING TEMPERATURE		0 ~ 50° C
STORAGE TEMPERATURE		-30 ~ 70° C
CERTIFICATION		CE
ORDERING		



SLIM-110

