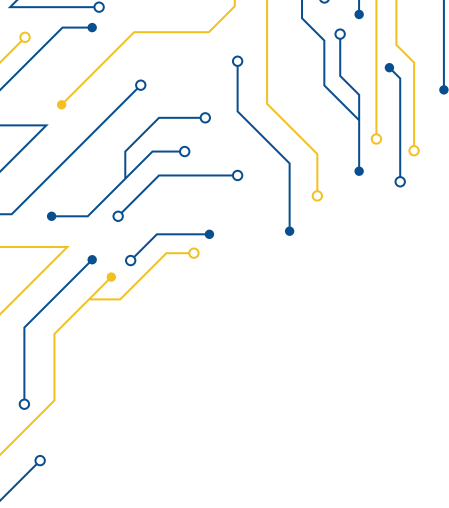




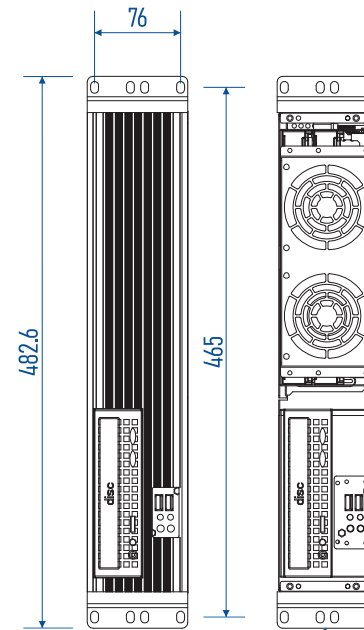
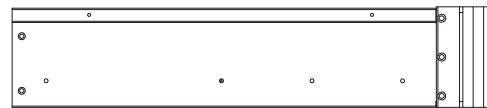
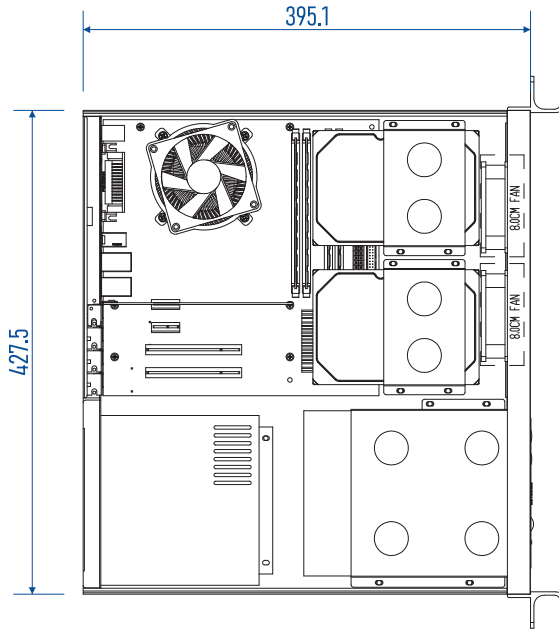
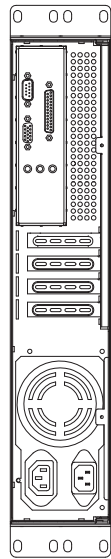
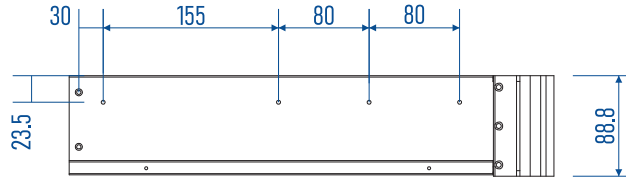
RACK PC 1 UNIT

ENVIRONMENTAL	
OPERATING TEMPERATURE	0°C ~ 50°C
STORAGE TEMPERATURE	-40°C ~ 75°C
OPERATING HUMIDITY	40°C @ 95% Relative Humidity, Non-condensing
MECHANICAL	
DIMENSIONS	482,6 x 177 x 470
WEIGHT	7 kg
ENCLOSURE	Aluminium, ventilated
MOUNTING	1x Unit Rack Mounting
LED INDICATORS	1x Power Status, 1x HDD activity, 2x LAN activity
BUTTONS	1x Power ON/OFF, System Reset
CERTIFICATE INFORMATION	
CERTIFICATIONS	CE / FCC CLASS A
IP RATING	IP20

MODEL SYSTEM		RACK 101-278
PROCESSORS		Intel® Core™ i3-12100TE, 4 Core, 4GHz, 12MB
		Intel® Core™ i3-13100TE, 4 Core, 4.1GHz, 12MB
		Intel® Core™ i5-1200TE 6 Core, 4.3GHz, 18MB
		Intel® Core™ i5-13500TE, 14 Core, 4.5GHz, 24MB
		Intel® Core™ i7-1200TE, 12 Core, 4.7GHz, 25MB
		Intel® Core™ i7-13700TE, 16 Core, 4.8GHz, 30MB
		Intel® Core™ i9-12900TE 16 Core, 5GHz, 30MB
		Intel® Core™ i9-13900TE, 24 Core, 5GHz, 36MB
CHIPSET		Intel® Q670E / H610E
BIOS		AMI EFI 256Mb SPI
GRAPHICS		up to Intel® UHD Graphics 770
SYSTEM MEMORY		
GENERAL FEATURES		2x 262-pin SO-DIMM DDR5 up to 5600MHz (Non-ECC)
MAX. CAPACITY		96GB
O.S. SUPPORT		
OS INFORMATION		WINDOWS 10 64bit 11 64bit
		Linux
STORAGE		
SATA		3x SATAIII 600Mb/s (RAID 0,1,5)
ETHERNET		
CONNECTOR		2x RJ45
LAN1		Intel® I219LM up to 2500 Mb/s
LAN2		Intel® I226 up to 2500 Mb/s
I/O		
USB Q670E		6x USB3.2 Gen2
USB H610E		2x USB3.2 Gen1 (optional 2x USB3.2 Gen1), 2x USB2.0
SERIAL		1x RS-232, 1x RS232/422/485
VIDEO		1x HDMI, 2x DisplayPort, supports up to 4 Independent Displays
AUDIO		1x Line-Out / Mic-In / Line-In
EXPANSION		
SLOTS		1x M-Key for NVMe SSD 2280, 1x E-Key for Wireless connection 2230
		PCIe x16 Gen5 (32GT/s) for discrete GPU card and storage devices
POWER REQUIREMENT		
DC INPUT		230 V 110V / 500W Default
DC INPUT CONNECTOR		ATX (24+4-pin) and +12V DC-In co-design



RACK 101-278



INSIDE VIEW