



## RACK PC 1 UNIT

### ENVIRONMENTAL

OPERATING TEMPERATURE	0°C ~ 50°C
STORAGE TEMPERATURE	-40°C ~ 75°C
OPERATING HUMIDITY	40°C @ 95% Relative Humidity, Non-condensing

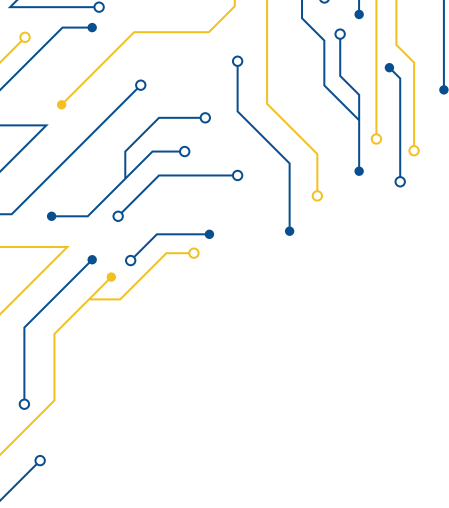
### MECHANICAL

DIMENSIONS	482,6 x 177 x 470
WEIGHT	7 kg
ENCLOSURE	Aluminium, ventilated
MOUNTING	1x Unit Rack Mounting
LED INDICATORS	1x Power Status, 1x HDD activity, 2x LAN activity
BUTTONS	1x Power ON/OFF, System Reset

### CERTIFICATE INFORMATION

CERTIFICATIONS	CE / FCC CLASS A
IP RATING	IP20

MODEL	RACK 101-1210
<b>SYSTEM</b>	
PROCESSORS	Intel® Coffee Lake Core™ i3-8100T 3.1GHz, 6MB, 35W Intel® Coffee Lake Core™ i5-8500T 2.1GHz, 9MB, 35W Intel® Coffee Lake Core™ i7-8700T 2.4GHz, 12MB, 35W Intel® Coffee Lake Core™ i9-9900T 2.1GHz, 16MB, 35W
CHIPSET	Intel® H310
BIOS	AMI SPI 128 Mbit
GRAPHICS	Intel® UHD Graphics
<b>SYSTEM MEMORY</b>	
GENERAL FEATURES	2x 260-pin SO-DIMM Dual Channel DDR4 2666MHz
MAX. CAPACITY	64GB (*32GB for i3 CPU)
<b>O.S. SUPPORT</b>	
OS INFORMATION	WINDOWS 10 64bit   11 64bit Linux
<b>STORAGE</b>	
SATA	4x SATA3 (6Gb/s), SATA3_1 shared with M.2 Key M
M.2	1x M.2 (Key M, 2242/2260/2280) with shared SATA3 for SSD
<b>ETHERNET</b>	
CONNECTOR	2x RJ45
LAN1	Intel® I210 with 10/100/1000 Mbps
LAN2	Intel® I219V with 10/100/1000 Mbps
<b>I/O</b>	
USB	4x USB 3.1 Gen1, 4x USB 2.0
SERIAL	3x RS-232, 1x RS-232/422/485
VIDEO (Dual Display)	2x DP 1.2, 1x VGA
AUDIO	2x Line-Out / Mic-In
<b>EXPANSION</b>	
PCIe	1x PCIe x16 Gen3
MINI-PCIe	1x Full/Half size with PCIe x1 and USB 2.0
MINI-PCIe	1x M.2 (Key E, 2230) with PCIe x1, USB 2.0 and CNVi for Wireless
<b>POWER REQUIREMENT</b>	
DC INPUT	230 V   110V / 500W Default
DC INPUT CONNECTOR	ATX (24+4-pin) and +12V DC-In co-design



## RACK 101-1210

