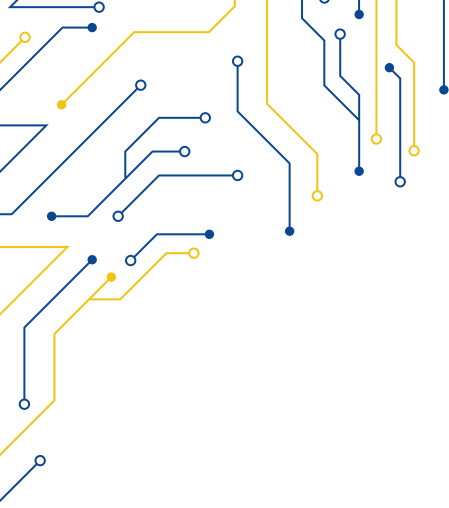


## FANLESS BOX PC

MECHANICAL	
DIMENSIONS	78 x 192 x 230 mm
WEIGHT	2.8 Kg
MOUNTING KIT	Wall Mount
ENVIRONMENTAL	
OPERATING TEMPERATURE	-10°C ~ 60°C with 0.7 m/s AirFlow
STORAGE TEMPERATURE	-40°C ~ 85°C
OPERATING HUMIDITY	40°C @ 95% Non-condensing
VIBRATION	With SSD: 3 Grms @5 ~ 500Hz, random With 2.5" HDD: 1 Grms @5 ~ 500Hz, random
SHOCK	20G, IEC68-2-27, half sine wave, 11ms duration (with SSD)
CERTIFICATE INFORMATION	
CERTIFICATIONS	CE / FCC Class A / CCC / BSMI / CB / UL
IP RATING	IP20

MODEL	MIC-770 V2
SYSTEM INFORMATION	
PROCESSORS	Intel® Core™ i3-10100TE 4/8 Cores 3.60GHz 6MB
	Intel® Core™ i5-10500TE 6/12 Cores 3.70GHz 12MB
	Intel® Core™ i7-10700TE 8/16 Cores 4.40GHz 16MB
	Intel® Core™ i9-10900TE 10/20 Cores 4.50GHz 20MB
SYSTEM MEMORY	2x 260-pin SO-DIMM Dual Channel DDR4 2933/2666 MHz
MAX. MEMORY	Max up to 64GB (2x 32GB slot)
CHIPSET	Intel® W480E/H420E
BIOS	AMI 256Mb/128Mb SPI Flash
GRAPHICS	Intel® HD Graphics 630/610, supports DirectX 12
SOFTWARE SUPPORT	
OS INFORMATION	Windows 10
	Linux OS
STORAGE	
HDD	1x 2.5" HDD/SSD
mSATA	1
RAID	0/1/5/10 (W408E SKU only)
EXPANSION	
Mini PCIe/mSATA	1x Mini-Pcie (via nano-SIM)
	1x mSATA
I/O	
USB	4x USB 3.2 (Gen 1), 4x USB 2.0
SERIAL	2x RS-232, 2x RS-232/422/485
VIDEO	1x VGA DB15 up to 1920x1200, 1x HDMI 4096 x 2160@30Hz
	2x independent displays
AUDIO INTERFACE	2x Line-Out, Mic-In
ETHERNET	
LAN CHIPSET	LAN 1: Intel® I219-LM with 10/100/1000Mbps
	LAN 2: Intel® I210-IT with 10/100/1000Mbps
LAN PORT	2x RJ45
POWER REQUIREMENT	
DC INPUT	9~36V DC
POWER CONSUMPTION	35.3W (typical), 112W (max.)
POWER	1x Power ON/OFF Switch
	2-pin terminal block (Optional)



**MIC-770 V2**

