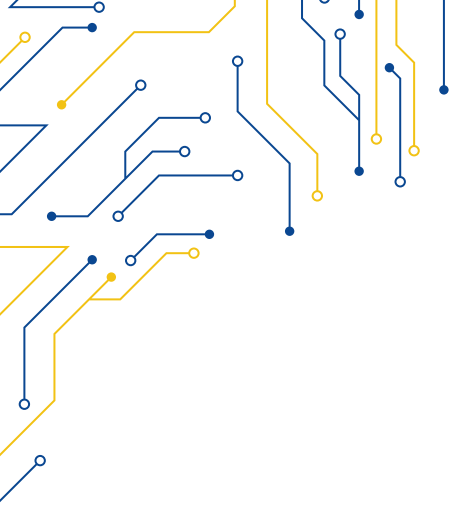


## STAINLESS STEEL PANEL

MECHANICAL	
CONSTRUCTION	Flat Front Bezel Design, 304 Stainless Steel chassis
MOUNTING	VESA Mount 75x75, Yoke Mount (Option)
DIMENSIONS (mm)	432 x 358 x 55.3
NET WEIGHT (kg)	8 kg
IP RATING	IP66/IP69K compliant front bezel
CERTIFICATE	CE / FCC Class A
ENVIRONMENT	
OPERATING TEMPERATURE	0 ~ 50° C      -20 ~ 60° C (Optional)
STORAGE TEMPERATURE	-30 ~ 70° C
STORAGE HUMIDITY	10 ~ 95% @40 non-condensing
INQUIRY CODES	
CiNOX-917BR	17" TFT, 1280x1024, Intel® Core 8th Gen, RTS, 9-36V DC, 350cd/m2
CiNOX-917BRH	17" TFT, 1280x1024, Intel® Core 8th Gen, RTS, 9-36V DC, 1000cd/m2
CiNOX-917BP	17" TFT, 1280x1024, Intel® Core 8th Gen, PCT, 9-36V DC, 350cd/m2
CiNOX-917BPH	17" TFT, 1280x1024, Intel® Core 8th Gen, PCT, 9-36V DC, 1000cd/m2

MODEL	CiNOX-917B	
SYSTEM		
CPU	Intel® Core 8th Gen. i3/i5 Processors (6MB cache, 1.6GHz   4MB cache, 2.2GHz)	
SYSTEM CHIPSET	SoC	
MEMORY (MAX)	2x 260-pin SO-DIMM up to 64GB DDR4 2400MHz	
OPERATING SYSTEM	Windows 10/11®	
GRAPHICS	Intel HD® Graphics 313/854MHz	
INTERFACE PORTS		
USB/SERIAL	1x M12 8-pin for USB 2.0 with waterproof cover and chain	
	1x M12 8-pin COM1, RS-232/422/485, default RS-232	
LAN	1x M12 8-pin for LAN with waterproof cover and chain	
ADDITIONAL PORTS	2x USB 2.0   1x USB 3.2 Gen. 1	
	1x LAN   1x COM   1x CAN   1x Touch ON/OFF button at the side	
STORAGE		
HDD	1x 2.5" SATA3 HDD (for option)	
M.2	1x B-Key slot (Support PCIe/SATA / 2241/2280 / Default 2242)	
EXPANSIONS		
EXPANSION SLOT	1x NANO-SIM	
	1x M.2 E-key 2230 (PCIe + USB) for optional WIFI/BT module	
	RFID module design on the front side (for option)	
DISPLAY		
DISPLAY TYPE	17" TFT-LCD 4:3	
MAX RESOLUTION	1280 x 1024	
MAX COLOR	16.7M	
BRIGHTNESS (cd/m²)	350	1000
VIEW ANGLE (H°/V°)	170/160	160/140
CONTRAST	800:1	
TOUCHSCREEN		
TYPE	Resistive (R)	Projected Capacitive (P)
INTERFACE	USB	
LIGHT TRANSMISSION	Resistive 80%	Capacitive 90%
POWER		
POWER INPUT	9 ~ 36V DC	
POWER CONSUMPTION	MAX. 67W	
POWER PORTS	1x M12 3-pin for DC power with waterproof cover and chain	
	1x Power switch on the rear	



**CiNOX-917B**

