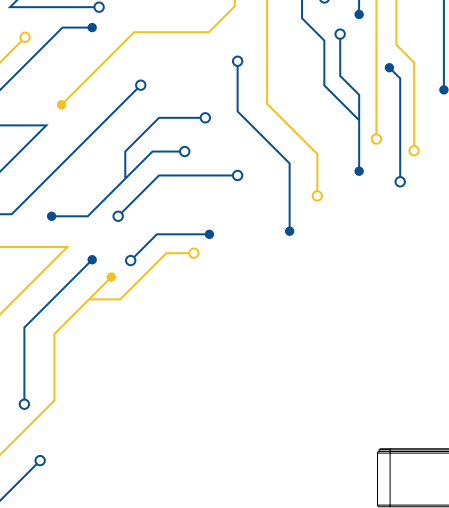


## STAINLESS STEEL PANEL

MECHANICAL	
CONSTRUCTION	Flat Front Bezel Design, 304 Stainless Steel chassis
MOUNTING	VESA Mount 100x100, Yoke Mount (Option)
DIMENSIONS (mm)	656 x 423 x 53
NET WEIGHT (kg)	13 kg
IP RATING	IP66/IP69K compliant front bezel
CERTIFICATE	CE / FCC Class A
ENVIRONMENT	
OPERATING TEMPERATURE	0 ~ 50° C      -20 ~ 60° C (Optional)
STORAGE TEMPERATURE	-30 ~ 70° C
STORAGE HUMIDITY	10 ~ 95% @40 non-condensing
INQUIRY CODES	
CiNOX-824R-J6	23.8" TFT, 1920x1080, Intel® Celeron J6412, RTS, 9-36V DC, 250cd/m2
CiNOX-824RH-J6	23.8" TFT, 1920x1080, Intel® Celeron J6412, RTS, 9-36V DC, 1000cd/m2
CiNOX-824P-J6	23.8" TFT, 1920x1080, Intel® Celeron J6412, PCT, 9-36V DC, 250cd/m2
CiNOX-824PH-J6	23.8" TFT, 1920x1080, Intel® Celeron J6412, PCT, 9-36V DC, 1000cd/m2

MODEL	CiNOX-824-J6	
SYSTEM		
CPU	Intel® Celeron J6412 2.0GHz	
SYSTEM CHIPSET	SoC	
MEMORY (MAX)	1x 260-pin SO-DIMM up to 32GB DDR4 3200MHz	
OPERATING SYSTEM	Windows 10/11®	
GRAPHICS	Intel HD® Graphics 313/854MHz	
INTERFACE PORTS		
USB/SERIAL	1x M12 8-pin for USB 2.0 with waterproof cover and chain	
	1x M12 8-pin COM1, RS-232/422/485, default RS-232	
LAN	1x M12 8-pin for LAN with waterproof cover and chain	
ADDITIONAL PORTS	2x Optional blank M12 for selecting two of the following:	
	2x USB 2.0   1x USB 3.0 1x LAN   1x COM   1x CAN   1x Touch ON/OFF button at the side	
STORAGE		
HDD	1x 2.5" SATA3 HDD	
M.2	1x B-Key slot SATA3 Default 2242	
EXPANSIONS		
EXPANSION SLOT	1x M.2 E-key 2230 (PCIe + USB) for optional WIFI/BT module RFID module design on the front side (for option)	
DISPLAY		
DISPLAY TYPE	23.8" TFT-LCD 16:9	
MAX RESOLUTION	1920 x 1080	
MAX COLOR	16.7M	
BRIGHTNESS (cd/m²)	250	1000
VIEW ANGLE (H°/V°)	178/178	
CONTRAST	3000:1	5000:1
TOUCHSCREEN		
TYPE	Resistive (R)	Projected Capacitive (P)
INTERFACE	USB	
LIGHT TRANSMISSION	Resistive 80%	Capacitive 90%
POWER		
POWER INPUT	9 ~ 36V DC	
POWER CONSUMPTION	MAX. 43W	
POWER PORTS	1x M12 3-pin for DC power with waterproof cover and chain	
	1x Power switch on the rear	



**CiNOX-824-J6**

