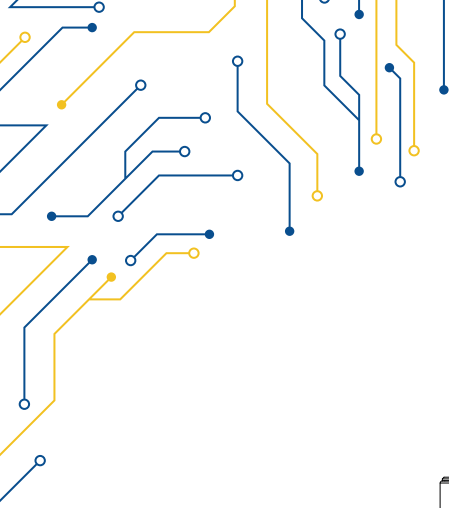


## STAINLESS STEEL PANEL

MECHANICAL	
CONSTRUCTION	Flat Front Bezel Design, 304 Stainless Steel chassis
MOUNTING	VESA Mount 75x75, Yoke Mount (Option)
DIMENSIONS (mm)	440x 290 x 55
NET WEIGHT (kg)	7 kg
IP RATING	IP66/IP69K compliant front bezel
CERTIFICATE	CE / FCC Class A
ENVIRONMENT	
OPERATING TEMPERATURE	0 ~ 50° C      -20 ~ 60° C (Optional)
STORAGE TEMPERATURE	-30 ~ 70° C
STORAGE HUMIDITY	10 ~ 95% @40 non-condensing
INQUIRY CODES	
CiNOX-816R-J6	15.6" TFT, 1366x768, Intel® Celeron J6412, RTS, 9-36V DC, 400/450cd/m2
CiNOX-816RH-J6	15.6" TFT, 1366x768, Intel® Celeron J6412, RTS, 9-36V DC, 1000cd/m2
CiNOX-816P-J6	15.6" TFT, 1366x768, Intel® Celeron J6412, PCT, 9-36V DC, 400/450cd/m2
CiNOX-816PH-J6	15.6" TFT, 1366x768, Intel® Celeron J6412, PCT, 9-36V DC, 1000cd/m2

MODEL	CiNOX-816-J6		
SYSTEM			
CPU	Intel® Celeron J6412 2.0GHz		
SYSTEM CHIPSET	SoC		
MEMORY (MAX)	1x 260-pin SO-DIMM up to 32GB DDR4 3200MHz		
OPERATING SYSTEM	Windows 10/11®		
GRAPHICS	Intel HD® Graphics 313/854MHz		
INTERFACE PORTS			
USB/SERIAL	1x M12 8-pin for USB 2.0 with waterproof cover and chain		
	1x M12 8-pin COM1, RS-232/422/485, default RS-232		
LAN	1x M12 8-pin for LAN with waterproof cover and chain		
ADDITIONAL PORTS	2x Optional blank M12 for selecting two of the following:		
	2x USB 2.0   1x USB 3.0 1x LAN   1x COM   1x CAN   1x Touch ON/OFF button at the side		
STORAGE			
HDD	1x 2.5" SATA3 HDD		
M.2	1x B-Key slot SATA3 Default 2242		
EXPANSIONS			
EXPANSION SLOT	1x M.2 E-key 2230 (PCIe + USB) for optional WIFI/BT module RFID module design on the front side (for option)		
DISPLAY			
DISPLAY TYPE	15.6" TFT-LCD 16:9		
MAX RESOLUTION	1366 x 768	1920 x 1080 (F)	
MAX COLOR	16.7M	16.2M	
BRIGHTNESS (cd/m²)	400/450	1000	
VIEW ANGLE (H°/V°)	170/170	170/160	160/160
CONTRAST	500:1	800:1	
TOUCHSCREEN			
TYPE	Resistive (R)	Projected Capacitive (P)	
INTERFACE	USB		
LIGHT TRANSMISSION	Resistive 80%	Capacitive 90%	
POWER			
POWER INPUT	9 ~ 36V DC		
POWER CONSUMPTION	MAX. 39W		
POWER PORTS	1x M12 3-pin for DC power with waterproof cover and chain		
	1x Power switch on the rear		



**CiNOX-816-J6**

