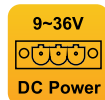
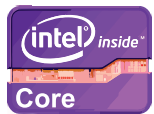
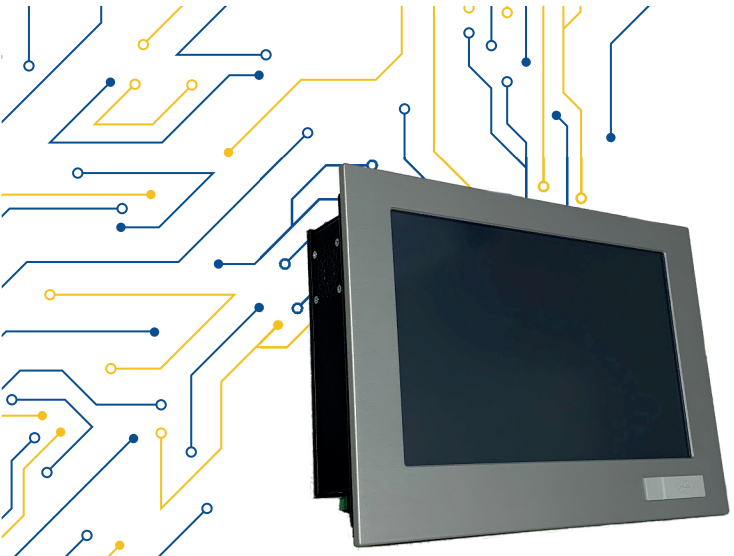


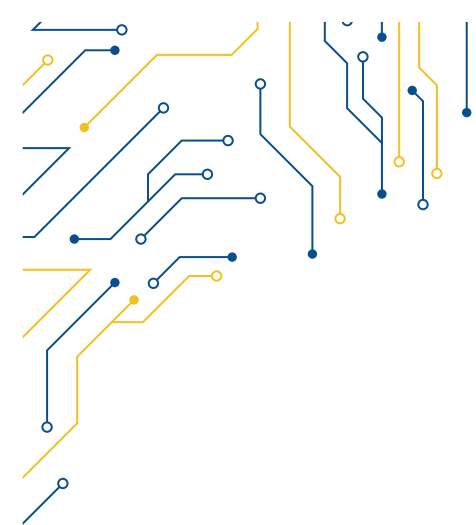
## BASIC-912W-S8



## ALUMINIUM PANEL PC

POWER	
POWER REQUIREMENT	9 ~ 36V DC
POWER CONNECTORS	ON/OFF Power Button, 3-pin Power Connector
MECHANICAL	
CONSTRUCTION	Aluminium Front Bezel, Ventilated Chassis in dyed metal plate
MOUNTING	Panel Mount
DIMENSIONS	314 x 217 x 76
NET WEIGHT	4.5 kg
IP RATING	IP65 compliant front bezel
CERTIFICATE	CE
ENVIRONMENT	
OPERATING TEMPERATURE	0 ~ 50° C
STORAGE TEMPERATURE	-30 ~ 70° C
STORAGE HUMIDITY	10 ~ 95% @40 non-condensing
INQUIRY CODES	
BASIC-912W-S8	12.1" TFT, 1280x800, Intel® Core 8th Gen, RTS, 9-36V DC, 300cd/m2
NOTE	
	RAM and Storage capacity must be specified in the inquiry

MODEL	BASIC-912W-S8
SYSTEM	
CPU	Intel® Core™ 8th Gen. i3-8100T, 3.1GHz, 6MB, 35W Intel® Core™ 8th Gen. i5-8500T, 2.1GHz, 9MB, 35W Intel® Core™ 8th Gen. i7-8700T, 2.4GHz, 12MB, 35W
SYSTEM CHIPSET	Intel® Q370, Socket LGA1151
MEMORY	2x 260-pin SO-DIMM max. 64GB DDR4 2666MHz
OPERATING SYSTEM	Windows 10®
GRAPHICS	Intel® Coffee Lake integrated Graphics
I/O	
USB	4x USB 3.1 Gen1, 4x USB 2.0
SERIAL/PARALLEL	2x COM RS232/422/485, 2x RS232
LAN	LAN1: 1x RJ45 Intel® I219LM with 10/100/1000 Mbps LAN2: 1x RJ45 Intel® I210 with 10/100/1000 Mbps
VIDEO	3x DP 1.2
AUDIO	1x Line-out, 1x Mic-in Realtek ALC887/897, High Definition Audio
STORAGE	
M.2	1x Key M (2242/2280) with PCIe x4 and SATA3 for SSD
RAID	Supports Intel® SATA RAID 0/1
SATA	2x SATA3 (6Gb/s)
EXPANSIONS	
M.2	1x Key E (2230) with PCIe x1, CNVI and USB 2.0 for Wireless
PCIe	1x PCIe x16 (Gen3, Support riser card x8/x8, x8/x4/x4)
PCIe	1x Full/Half size with PCIe x1 and USB 2.0
DISPLAY	
DISPLAY TYPE	12.1" TFT-LCD 16:10
MAX RESOLUTION	1280x800
MAX COLOR	16.7M
BRIGHTNESS (cd/m²)	400
VIEW ANGLE (H°/V°)	88/88
CONTRAST	1000:1
TOUCHSCREEN	
TYPE	Resistive Zero Bezel (R)
INTERFACE	USB
LIGHT TRANSMISSION	Resistive: 80



## BASIC-912W-S8

