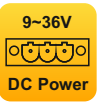


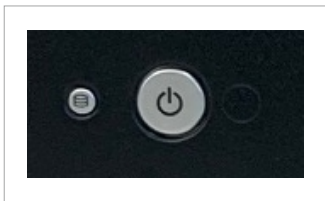
## BASIC-115-BT2



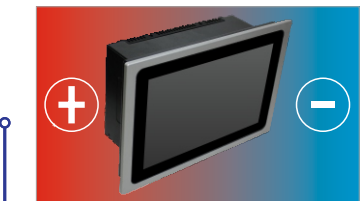
### ALUMINIUM DISPLAY



Ip65 Front Panel



Accessible power button

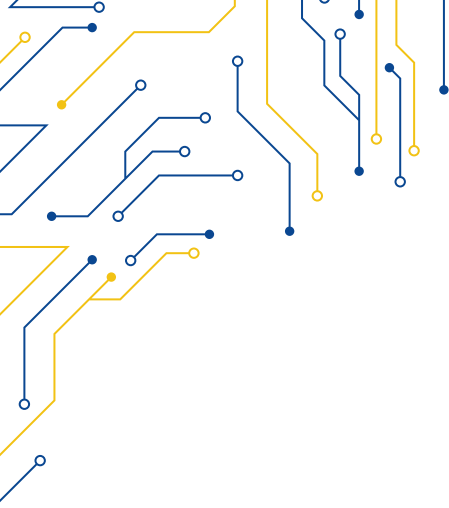


Wide temperature range



Wide range power input

MODEL	BASIC-115-BT2
<b>I/O</b>	
VGA	1
HDMI	-
DVI	1
TOUCHSCREEN	USB
OTHERS	USB Front Panel
OSD CONTROL	-
POWER	4-pin DC terminal block; 2-pin remote power switch
<b>DISPLAY</b>	
DISPLAY TYPE	15" TFT-LCD 4:3
MAX RESOLUTION	1024 x 768
MAX COLOR	16.7 M
BRIGHTNESS (cd/m <sup>2</sup> )	500
VIEW ANGLE (H°/V°)	85/85°
CONTRAST	1500:1
<b>TOUCHSCREEN</b>	
TYPE	Resistive Zero Bezel (R)
INTERFACE	USB
<b>POWER</b>	
POWER INPUT	9 ~ 36V DC
POWER CONSUMPTION	30W MAX
<b>MECHANICAL</b>	
CONSTRUCTION	Aluminium front panel
IP RATING	IP65 front panel
MOUNTING	Panel Mounting
DIMENSIONS (mm)	430 x 330 x 61
NET WEIGHT (kg)	4.5 kg
<b>ENVIRONMENT</b>	
OPERATING TEMPERATURE	0 ~ 50° C
STORAGE TEMPERATURE	-20 ~ 70° C
STORAGE UMIDITY	10 ~ 90% @40 non-condensing
CERTIFICATION	CE
<b>ORDERING</b>	15" TFT, 1024x768, RST, 9-36V DC, 500cd/m2



**BASIC-115-BT2**

