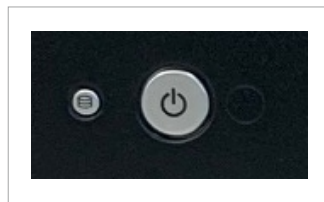


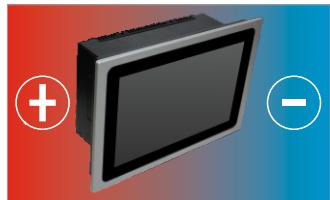
ALUMINIUM DISPLAY



Ip65 Front Panel



Accessible power button

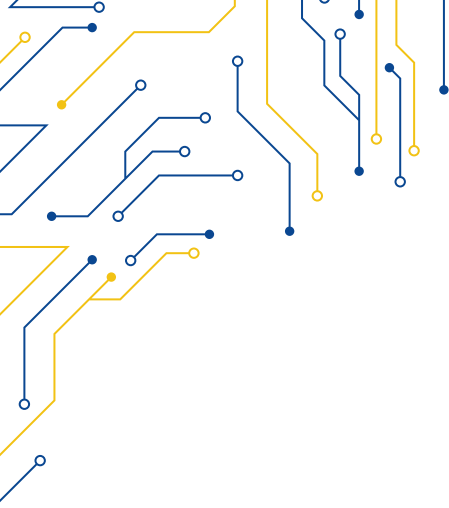


Wide temperature range



Wide range power input

MODEL	BASIC-110A
I/O	
VGA	1
HDMI	1
DP	1
TOUCHSCREEN	USB
OTHERS	USB Front Panel
OSD CONTROL	-
POWER	1 DC power input
DISPLAY	
DISPLAY TYPE	10.4" TFT-LCD 4:3
MAX RESOLUTION	1024 x 768
MAX COLOR	16.2 M
BRIGHTNESS (cd/m ²)	500
VIEW ANGLE (H°/V°)	88/88/88/88°
CONTRAST	1000:1
TOUCHSCREEN	
TYPE	Resistive Zero Bezel (R)
INTERFACE	USB
POWER	
POWER INPUT	9 ~ 36V DC
POWER CONSUMPTION	60W MAX
MECHANICAL	
CONSTRUCTION	Aluminium front panel
IP RATING	IP65 front panel
MOUNTING	Panel Mounting
DIMENSIONS (mm)	300 x 245 x 59.5
NET WEIGHT (kg)	4 kg
ENVIRONMENT	
OPERATING TEMPERATURE	0 ~ 55° C
STORAGE UMIDITY	30 ~ 95° C
CERTIFICATION	CE
ORDERING	10.4" TFT, 1024X768, RST, 9-36V DC, 500cd/m2



BASIC-110A

