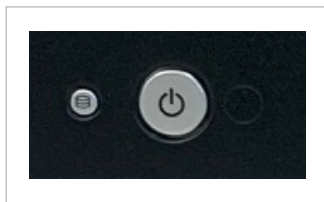


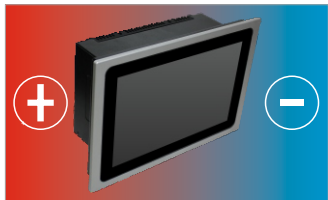
## ALUMINIUM DISPLAY



Ip65 Front Panel



Accessible power button

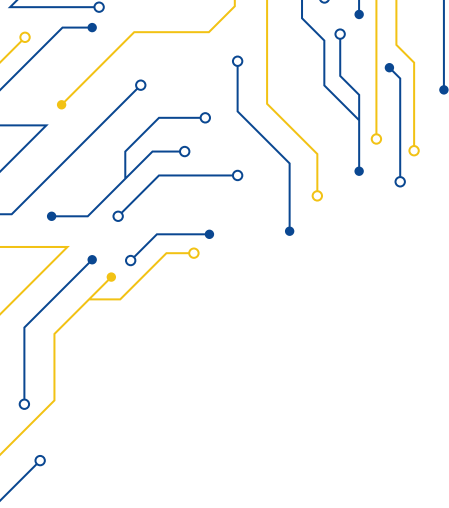


Wide temperature range



Wide range power input

MODEL	BASIC-108A
<b>I/O</b>	
VGA	1
HDMI	1
DP	1
TOUCHSCREEN	USB
OTHERS	USB Front Panel
OSD CONTROL	-
POWER	1 DC power input
<b>DISPLAY</b>	
DISPLAY TYPE	8.4" TFT-LCD 4:3
MAX RESOLUTION	800 x 600
MAX COLOR	16.2 M
BRIGHTNESS (cd/m <sup>2</sup> )	450
VIEW ANGLE (H°/V°)	80/80/80/60°
CONTRAST	1000:1
<b>TOUCHSCREEN</b>	
TYPE	Resistive Zero Bezel (R)
INTERFACE	USB
<b>POWER</b>	
POWER INPUT	9 ~ 36V DC
POWER CONSUMPTION	60W MAX
<b>MECHANICAL</b>	
CONSTRUCTION	Aluminium front panel
IP RATING	IP65 front panel
MOUNTING	Panel Mounting
DIMENSIONS (mm)	250 x 210 x 54
NET WEIGHT (kg)	3.5 kg
<b>ENVIRONMENT</b>	
OPERATING TEMPERATURE	0 ~ 55° C
STORAGE UMIDITY	30 ~ 95° C
CERTIFICATION	CE
<b>ORDERING</b>	8.4" TFT, 800x600, RST, 9-36V DC, 450cd/m2



**BASIC-108A**

