

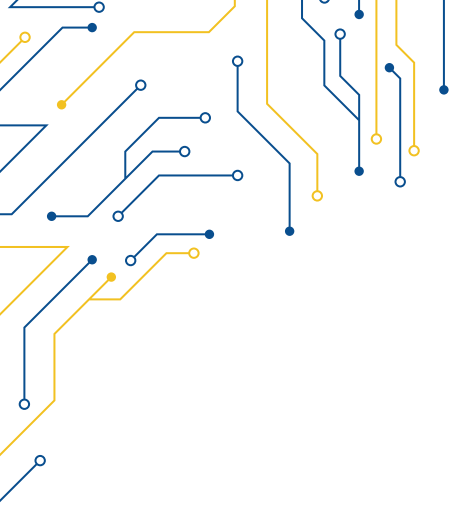


FANLESS BOX PC

MECHANICAL & ENVIRONMENTAL

DIMENSIONS	225 x 140 x 45 mm
MOUNTING KIT	Wall Mount kit
CERTIFICATE INFORMATION	
CERTIFICATIONS	CE / FCC CLASS B
OPERATING TEMPERATURE	0°C ~ 50°C
AIR FLOW CONDITION	50°C ~ 60°C at 0.7m/s
STORAGE TEMPERATURE	-40°C ~ 85°C
OPERATING HUMIDITY	40°C @ 95% Relative Humidity, Non-condensing
IP RATING	IP20

MODEL	MICROBOX-240
SYSTEM INFORMATION	
PROCESSOR	Intel® Celeron™ J6412
CPU SPEED	Max. 2.6GHz 2.0GHz, 10W, QuadCore, 1.5MB Cache
BIOS	AMI SPI 256Mbit, XQ2.0
SYSTEM MEMORY	2x SO-DIMM DDR4 3200MHz Slot
MAX. MEMORY	Max up to 16GB
CHIPSET	Intel® UHD Graphics
SOFTWARE SUPPORT	
OS INFORMATION	WINDOWS 10/11 64bit
STORAGE	
M.2 E-KEY	1x M.2 E-Key 2280 (SATA 3.0, support NVMe SSD)
SATA	1x 2.5" SATA Driver HDD/SSD
EXPANSION	
M.2 M-KEY	1x M.2 M-Key 2280 (SATA 3.0, support NVMe SSD)
MINI-PCIE	1x full-size Mini-PCle with SIM socket
I/O	
USB PORT	4x USB 3.2 Gen. 2 Type A, 2x USB 2.0 Type A
SERIAL	1x DB9 COM2 RS232/422/485, 3x DB9 COM1/3/4 RS232
VIDEO	2x HDMI 2.0, max. resolution 4096x2160 @60Hz
AUDIO	1x Line-Out
LED INDICATORS	1x Power LED, 1x HDD Active LED
ANTENNAS	2x Optional Antenna Holes
BUTTONS	1x Power Button
ETHERNET	
LAN PORT	2x RJ45
LAN CHIPSET	LAN1: Intel® i211AT
	LAN2: Intel® i211AT
POWER REQUIREMENT	
DC INPUT	9~36V DC
CONNECTOR	2-pin PHOENIX connector



MICROBOX-240

